



**CRAYKE HOME AND SCHOOL ASSOCIATION**

# **SPRING TERM 2025 NEWSLETTER**





**THANK YOU!**

## A MESSAGE FROM CHASA

As we come to the end of the spring term, we would like to update you on the past three months and what has been achieved. With help from parents/carers, staff, the children and the wider community, we have had some wonderful events and here we are to show you what the money YOU have raised has been spent on. We are ever so grateful for your continued support and hope you are just as excited as us about the events coming up next term.

Have a wonderful Easter!

# This year's focus is on supporting the development of **THE OUTDOORS** for children in school.



CHASA is supporting the school in the development of the outdoor areas by funding an outdoor art shed and base, including art equipment and materials for the children.

If anyone can help with sourcing art equipment donations for the art shed e.g., water butt, clipboards, etc. please contact [bstubbins@crayke.n-yorks.sch.uk](mailto:bstubbins@crayke.n-yorks.sch.uk).



---

The Tesco grant received will help to fund outdoor play equipment and art shed equipment.



---

As part of the outdoors focus CHASA is funding a forest quest trip for each class.

---

The art shed will be used at breaktimes and lunchtimes for children who would like the opportunity to experience a quieter playtime and be creative.

With your help, since the start  
of January 2025, CHASA has  
raised:

**£2,298**

\* APPROX. FIGURE

**Thank  
YOU!**





# FUNDRAISING JAN – MAR 25

**£2,298 \***

**Uniform  
Sales  
£46.50**

**School  
Lottery  
£377.40\***

**Tesco  
Grant  
£1000**

**Mother's  
Day Stall  
£98.30**

**Easy-  
Fundraising  
£75.15\***

**CHASA  
Wonka  
Bars  
£265**

**UV  
Valentines  
Disco  
£352**

**Tuck  
Stall  
£83.34\***



**\*APPROX.**

**FOR A MORE DETAILED INSIGHT, PLEASE CONTACT CHASATREASURER@CRAYKE.N-YORKS.SCH.UK**

# WHAT DID CHASA FUND (JAN-MAR 25)?

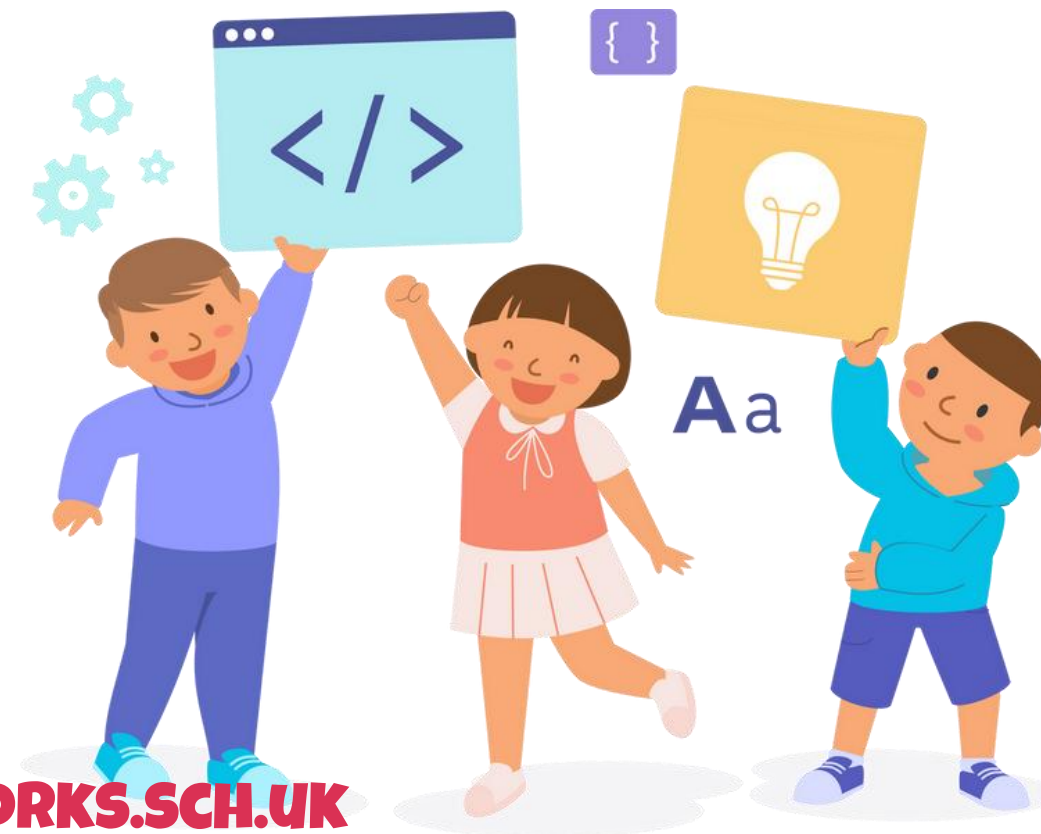
**Art  
Shed**

**Art Shed  
Base  
Materials**

**Class  
Trip  
Contributions**

**Forest  
Quest  
Trips for  
all  
Classes**

**Christmas  
Pantomime  
Deposit**



**FOR A MORE DETAILED INSIGHT, PLEASE CONTACT [CHASATREASURER@CRAYKE.N-YORKS.SCH.UK](mailto:CHASATREASURER@CRAYKE.N-YORKS.SCH.UK)**

# Summer Fair Update

We are sad to announce that the Crayke School Summer Fair will not be taking place in 2025. Unfortunately, due to not having enough people to organise the event, we're unable to make it happen this year.

This was not an easy decision, and we know how much the fair means to our school and community. We'd like to thank everyone who has supported it over the years.

While we're taking a break in 2025, this isn't necessarily the end. This is now over to you, if you'd like to see the fair return in the future and want to get involved to make it happen, we'd love to hear from you! Please email: [bstubbins@crayke.n-yorks.sch.uk](mailto:bstubbins@crayke.n-yorks.sch.uk)

We hope that the events that we have planned instead for summer (see next slide) will provide lots of enjoyment for all. Full details to follow in the summer term.

Thank you for your understanding and your ongoing support.



Next CHASA Meeting – All Welcome  
9.15am Tuesday 22nd April 2025

Break The Rules Day  
Friday 23rd May 2025

Summer Online Auction  
May–July 2025

CHASA doughnut stall – Ane Street Fair  
Sunday 8<sup>th</sup> June 2025

Party on the Playground  
Thursday 3<sup>rd</sup> July 2025

# DATES FOR THE DIARY



# W O CURRENT FUNDRAISING



## TUCK SHOP / ICE CREAM FRIDAY

Every Friday, the children love the tuck shop or ice cream stall after school (ice cream sales will start after the Easter holidays). This couldn't happen without the commitment and support of kind volunteers. Thank you to our Tuck Shop Manager for all their hard work.



## PRE-LOVED UNIFORM

We have a stock of pre-loved uniform and have regular uniform sales. We love the concept of recycling to do our bit to save the planet; it saves you money and raises money for the school.

If you require any items, please contact us. If you have any good quality uniform items that your child has outgrown, we encourage you to donate to our stock (via the school office). Thank you to our Uniform Manager for all their hard work.



# HELP US RAISE FUNDS FOR FREE!

## PRINTER CARTRIDGE RECYCLING



We are part of an initiative to recycle empty printer cartridges and toners and to raise funds for school in the process. If you have any “empties” please drop them in the box near the front door at school. For more info visit: <https://www.emptiesplease.com/schools/>



# HELP US RAISE FUNDS FOR FREE!

## EASY FUNDRAISING



Sign up via this link: [Easy Fundraising for Crayke School](#) and make Crayke CE School your chosen charity and they will donate a small percentage of your purchase cost to us (at no cost to you).

Just use the app or website every time you shop online.

Hundreds of retailers have signed up including Amazon, Argos, Next, Ebay, John Lewis, M&S, Just Eat, TUI, Trainline and many, many more...

They also give a lump sum to us if accessed to compare and change insurance or utility providers. Please encourage relatives and friends to sign up too!



# Minimal effort fundraising..

## SCHOOL LOTTERY

‘Your school lottery’ was launched over a year ago and so far, 74 tickets each week have been purchased by wonderful parents/carers, staff, governors and the wider community. We are on target to make £1539.20 this year (January-December). Tickets cost £1 per week and there is a Crayke school winner each week, plus you will be in with the chance of winning the £25,000 jackpot! Please support us by signing up via this link: [Crayke School Lottery Sign Up](#)





# SCHOOL LOTTERY

START  
HERE



**SUPPORT OUR LOTTERY TODAY**

- £1 per week
- Weekly cash prizes
- £25,000 jackpot

**How it works...**

It's simple—choose 6 numbers between 0-9 and if they match the weekly lottery draw, you win great prizes. One of our players will win a cash prize every week, maybe even the £25k jackpot! Tickets cost just £1 per week and the proceeds are donated to Crayke C of E Primary School

Every Saturday at 8pm the numbers are drawn and posted online. Winners are notified by email and winnings paid into the account of your choice.

The easiest way to join our lottery is online at [YourSchoolLottery.co.uk](https://yourschoollottery.co.uk) by direct debit or debit card.

**It's so easy to join and will make a real difference to Crayke C of E Primary School**

**Splitting the £1.00**



- 40p goes to our school
- 36p goes to cash prizes
- 20p goes to admin costs
- 4p goes to VAT

**The Maths...** 100 tickets sold a week means

- = £30 weekly cash prize
- = £2,080 a year for our school



To start supporting, visit:  
**[yourschoollottery.co.uk](https://yourschoollottery.co.uk)**  
and search for: Crayke


GambleAware 18+





# Turn every £1 raised into £2...

# MATCH FUNDING

Do you or anyone you know work for any of these companies? 

They all have match funding schemes, so whatever we raise at an event, the company will match and donate to us.

This list is not exhaustive, many other companies offer this scheme, so please do check with your HR department!



**IF YOU CAN HELP, PLEASE CONTACT: [bstubbins@crayke.n-yorks.sch.uk](mailto:bstubbins@crayke.n-yorks.sch.uk)**



# CHASA COMMITTEE

## CONTACT DETAILS



Becky  
Stubbins

---

**CHAIR**

bstubbins@crayke.n-  
yorks.sch.uk



Victoria  
Cain

---

**VICE CHAIR**

vcain@crayke.n-  
yorks.sch.uk



Tracey  
Swiers

---

**TREASURER**

chasatreasurer@cra-  
yke.n-yorks.sch.uk



Jade  
Bunker

---

**SECRETARY**

jbunker@crayke.n-  
yorks.sch.uk