

# CRAYKE

CHURCH OF ENGLAND PRIMARY SCHOOL

Respect | Friendship | Forgiveness | Determination

*"Follow your pathway and we grow together with confidence"*

# Parent/Carer Presentation




**Judi Jackson - Headteacher**  
**2025-2026**

*You did not choose me, I chose you that you might **go and bear fruit, fruit that will last** so that whatever you ask in my name the Father will give you. John 15:16*

# Programme of Events

Time	Event	Location	Led by	Other info
1:30pm	Parents/carers to spend time in classrooms	All classes	All staff	Drop in basis
2:15pm	Presentation to all parents/carers – priorities for the year ahead	Hall	Mrs Jackson	
2:35pm	Presentation for APPLE class parents/carers	Hall	Mrs Helfferich	Parents/carers of children not in these classes are welcome to spend additional time in classes during the other presentations.
2:45pm	Presentation for BEECH class parents/carers	Hall	Mrs Dobson	
2:55pm	Presentation for HOLLY class parents/carers	Hall	Miss Williams	
3:05pm	Presentation for OAK class parents/carers	Hall	Mrs Seligman	
3:15pm	Close – parents/carers to wait on playground to collect			



# Vision for the year ahead

Welcome to the **Year of the Festivals!**

- Continue to build on the success of previous years...
  - Curriculum
  - OPAL
  - Pupil leadership
  - Valuing difference
  - Developing staff at all levels



# Summary of School Improvement Priorities 2025 - 2026

Quality of Education	Personal Development	Behaviour and Attitudes	Leadership and Management	EYFS
<i>To continue to implement a broad and balanced curriculum that inspires all pupils to succeed and achieve good outcomes.</i>	<i>To continue to support exceptional personal development</i>	<i>To further develop a culture which embodies our Christian Values and impacts positively on pupils' self-confidence, behaviour and attitudes</i>	<i>To continue to develop strong and impactful leadership at all levels</i>	<i>To ensure children starting school have the best possible opportunities</i>
To continue to embed and refine a <b>curriculum</b> that is exciting and engaging for all learners and enables all to make progress.	To implement initiatives focusing on <b>nutrition, physical activity and mental well-being</b> with a goal of achieving the Healthy Schools Award	To continue to implement and review the <b>behaviour policy</b> effectively ensuring that everyone lives out the school vision and values and supports children with additional needs.	To <b>maximise the use of Teaching Assistants</b> across school including effective deployment, support to develop pupils' independence and the delivery of high-quality interventions.	To support children who come to us from a range of different settings to be <b>school ready</b> as soon as possible.
To expand outdoor learning opportunities to enhance engagement and learning outcomes through the <b>implementation of the OPAL programme</b> .	To develop <b>pupil leadership skills</b> including identifying and training pupils to lead Collective Worship.	To continue to <b>focus on levels of engagement</b> within the classroom ensuring that low level disruption is eradicated.	To <b>revisit the vision and values</b> to ensure they are understood and embraced by the whole school community.	To strengthen <b>parent/carers involvement</b> in their children's early education to enhance learning outcomes.
Ensure the <b>SMSC curriculum</b> is well-developed, with clear links to the school's Christian vision and values.	To continue to develop pupils' participation in <b>spiritual, moral, social and cultural opportunities</b> and incorporate these into our "Year of the Festivals."	To continue to foster an environment of inclusion and respect where <b>difference is valued</b> and nurtured and all are encouraged to make a positive contribution.	To continue to support the <b>development of staff at all levels</b> especially in relation to Subject Leadership.	To improve children's <b>early mathematical understanding</b> through engagement with the White Rose Reception Jigsaws trial.

# Our School Plan for 2025/2026

**Follow your pathway and we grow together with confidence**

**"You did not choose me, I chose you that you might go and bear fruit, fruit that will last so that whatever you ask in my name the Father will give you."**

**John 15:16**

**01**

## Learning and Lessons

- We want all children to enjoy learning lots of different things; we will make lessons fun and exciting so everyone can do their best.
- We will spend more time learning outside in the fresh air and have fun with nature.
- We will learn about our school values and how they help us be kind, strong and caring.

**02**

## Growing as People

- We want everyone to be healthy and happy, so we will learn about good food, exercise, and looking after our minds.
- Some children will help lead our school prayers and special times together.
- We will celebrate lots of different festivals and learn about what they mean to people.

**03**

## Being Kind and Respectful

- We want everyone to follow our school values- respect, friendship, forgiveness and determination - every day.
- We will make sure everyone listens carefully and behaves well in class so we can all learn without distractions.
- We will be kind to everyone, celebrate what makes us different and help each other to do our best.

**04**

## Leaders Helping Everyone

- Adults in school will help children learn to do things by themselves and give extra support when needed.
- We will remind everyone about our school values and why they are important.
- Adults will keep learning new things to help all children learn better.

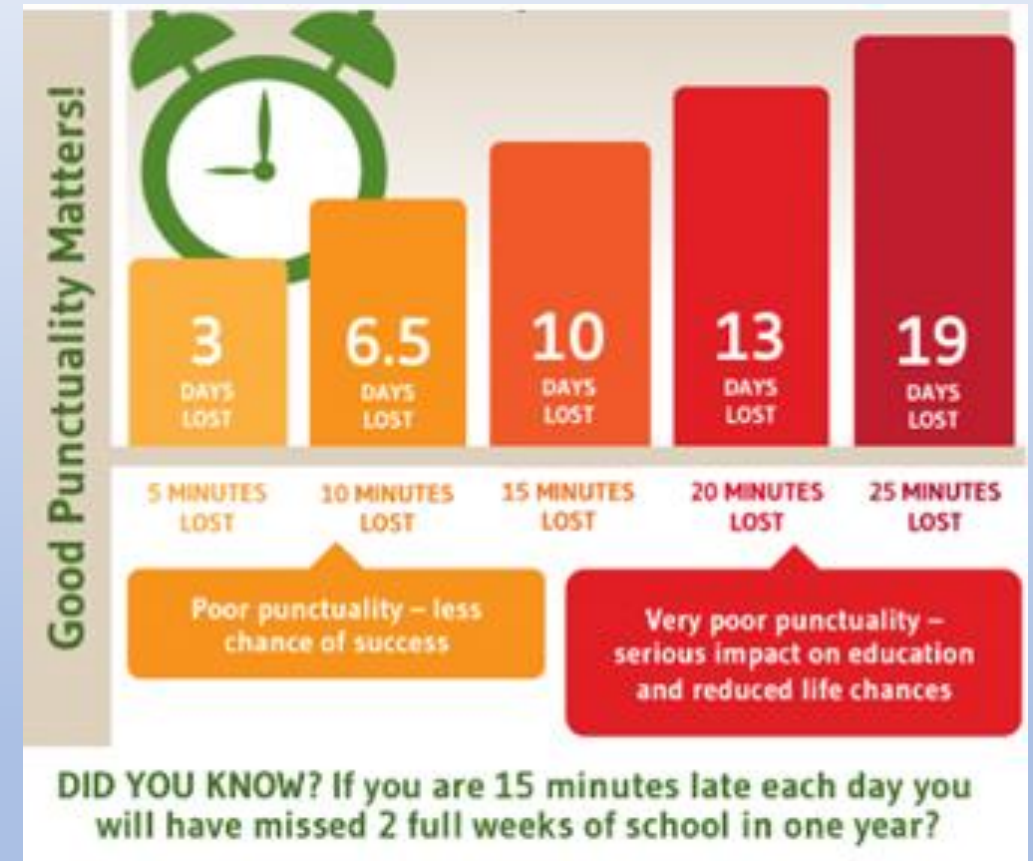
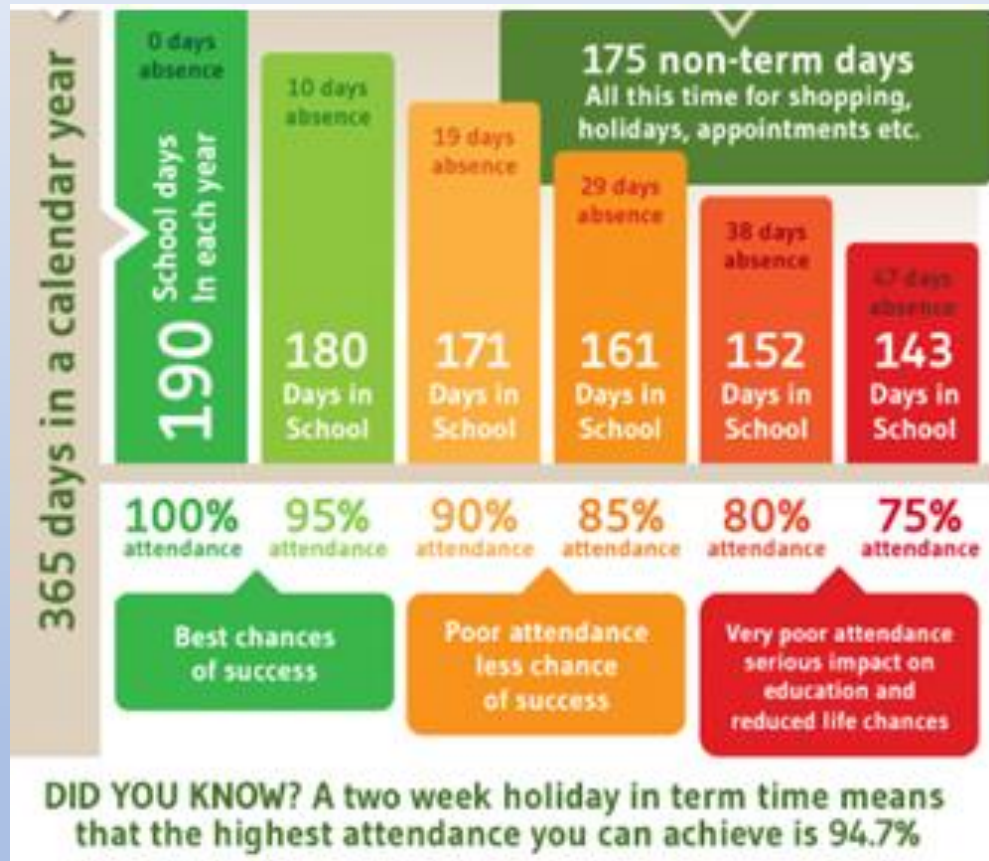
**05**

## Starting School Well

- We will help new children settle in quickly and feel ready for school.
- We will work closely with parents and carers to help children learn at home and at school.
- We will use fun maths activities to help children understand numbers and shapes from the start.



# Attendance



# Jigsaws



## Headline info...

- High quality wraparound childcare available on site from 7:30am – 6:00pm.
- Ad hoc places are available and at short notice.
- Caroline (Play leader) and Zoe (Play worker)
  - Breakfast: £5
  - Club session (3:30pm-4:30pm) £5.50
  - Full session: £11
- Tax free child care/Universal credit can reduce costs
- Contact [jigsaws@crayke.n-yorks.sch.uk](mailto:jigsaws@crayke.n-yorks.sch.uk)



# Vision Statement

*“Follow your pathway and we grow together with confidence.”*

As a happy and caring school family, which respects everyone as an individual, our vision is to grow **compassionate, confident and resilient learners** who fulfil their unique potential and **become the best version of themselves** to thrive in an ever-changing world.



## CRAYKE

CHURCH OF ENGLAND PRIMARY SCHOOL

Respect | Friendship | Forgiveness | Determination

*“Follow your pathway and we grow together with confidence”*



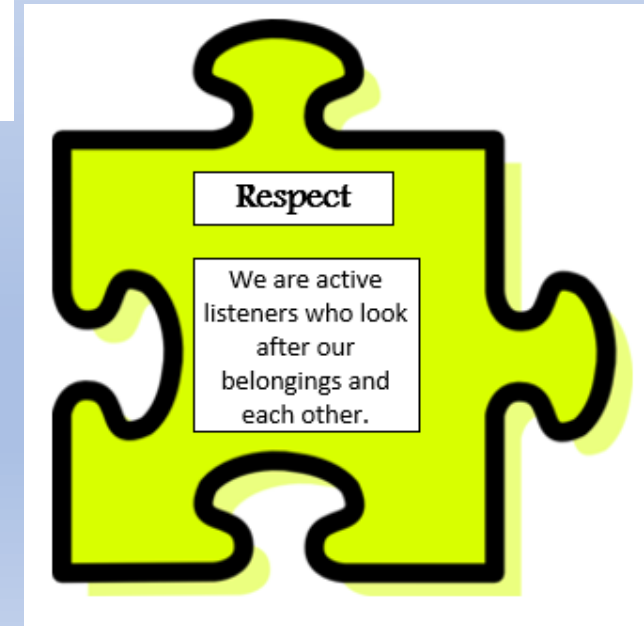
# Biblical Reference

*You did not choose me, I chose you that you might **go and bear fruit, fruit that will last** so that whatever you ask in my name the Father will give you.*

John 15:16



# Our Core Values





# Crayke CE Primary School

## Home School Agreement 2025/2026

School will:	Family will:	Children will:
Provide a safe and happy environment where all are valued, enabling your child to be the best version of themselves.	Fulfil our legal responsibility to ensure your child arrives at school on time and is collected on time.	Always try your hardest to follow our school rules, remembering to be <b>Ready, Respectful</b> and <b>Safe</b>
Provide high quality teaching and support by means of a broad and balanced curriculum which considers children's individual needs in line with our school vision and values, in a positive and stimulating learning environment.	Be committed to good school attendance by ensuring your child attends regularly and informing us by 9:30am on the first day of absence by contacting 01347 821767 or <a href="mailto:admin@crayke.n-yorks.sch.uk">admin@crayke.n-yorks.sch.uk</a>	Follow our school core values: <b>Friendship</b> – we include everyone, using kind words and actions <b>Forgiveness</b> – we are honest and we learn from our mistakes <b>Respect</b> – we are active listeners who look after our belongings and each other <b>Determination</b> – we try our best, aiming high without giving up
Model and develop Christian values.	Support the school with our uniform expectations including PE kit, homework policies and with regular reading at home. Support the school policies and guidelines regarding behaviour.	Take responsibility for your own learning and behaviour and bring a positive attitude to school every day.
Keep you informed of your child's progress and welcome your involvement in the learning process.	Attend Parent Consultation Evenings and ant other school meetings to discuss your child's progress and support their learning.	Share and talk about any problems you have and ask for help when you need it.
Inform you about what we teach the children each term and provide homework and reading diaries.	Conduct discussions with staff in a respectful manner, raising any concerns directly with the school.	Go to bed at a sensible time during the week to ensure you have enough sleep to be ready to learn the next day.
Teach your child to develop a positive attitude towards everyone regardless of differences.	Ensure that access to online devices and games is restricted (especially overnight) and that your child only has access to age appropriate games.	Follow the rules on using devices safely in school – iPads, laptops and Chromebooks. Leave all other electronic devices at home including Smart watches and phones.
Set high expectations by encouraging children to do their best at all times, both academically and socially.	Make the school aware of any changes, concerns or problems which might affect your child's progress e.g. changes in home circumstances. Keep the school informed of any changes of contact details.	Read at home and bring my reading record into school every day.

Parent/carer name: \_\_\_\_\_  
Parent/carer signature: \_\_\_\_\_

Child's name: \_\_\_\_\_  
Date: \_\_\_\_\_

# How you can get involved in school life...

- Talk to your child!
- Read the newsletter
- Browse the website
- Receive and action texts/emails/webposts
- Home School Values
- Contribute to reading diaries
- Attend parent consultation evenings
- CHASA



# Sharing pupil progress

October, March  
and July – via  
email

## Class Teacher Comments

Attitudes to Learning	
Learning behaviour	Pupil is achieving these...
Hardworking	
Listens carefully	
Follows instructions	
Works well in a group	
Well organised	
Presents work well	
Behaves well	
Completes work	

Effort - Core Subjects	
Subject	Effort
Reading	
Writing	
Maths	
Science	
Effort Key:	
Excellent:	Effort is above and beyond and consistently exceeds expectations
Very Good:	Effort exceeds expectations in lessons
Good:	Consistently good effort in all areas
Satisfactory:	Effort is usually good, but not always consistently applied
Needs Improvement:	Effort is sometimes good, but needs to improve to succeed

## Attendance

Attendance: 100.0%		99%	Excellent attendance
		96%	Good attendance
Authorised Absences: 0	Unauthorised Absences: 0	91%	Room for improvement
		90% or lower	Cause for concern

Signed: - Class Teacher



# Programme of Events

Time	Event	Location	Led by	Other info
1:30pm	Parents/carers to spend time in classrooms	All classes	All staff	Drop in basis
2:15pm	Presentation to all parents/carers – priorities for the year ahead	Hall	Mrs Jackson	
2:35pm	Presentation for APPLE class parents/carers	Hall	Mrs Helfferich	Parents/carers of children not in these classes are welcome to spend additional time in classes during the other presentations.
2:45pm	Presentation for BEECH class parents/carers	Hall	Mrs Dobson	
2:55pm	Presentation for HOLLY class parents/carers	Hall	Miss Williams	
3:05pm	Presentation for OAK class parents/carers	Hall	Mrs Seligman	
3:15pm	Close – parents/carers to wait on playground to collect			

